

北京市普通高等学校艺术类专业 统一考试说明

III

(一) 戏剧影视表演方向

	300		100
50		50	100

(二) 服装表演方向

3.

2

4.

3

(二) 服装表演方向

1.

5 10

2.

5 10

3.

1 ;

2

(三) 戏剧影视导演方向

1.

2.

3

3.

,

1200

150

1

1

1200

2

1200

形体数据测量方法与要求

1.

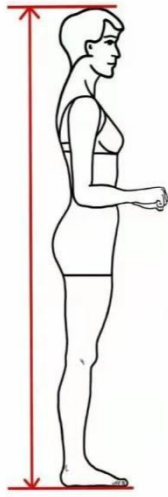
1

2.

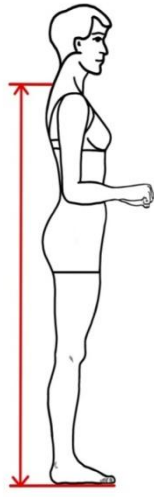
2

3.

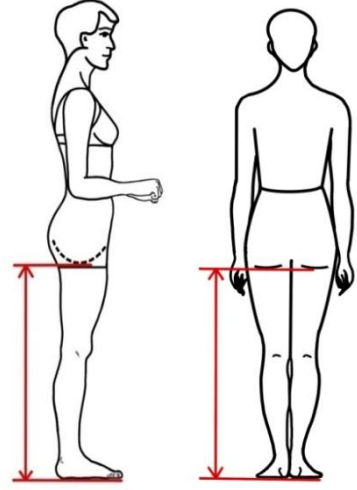
3



1

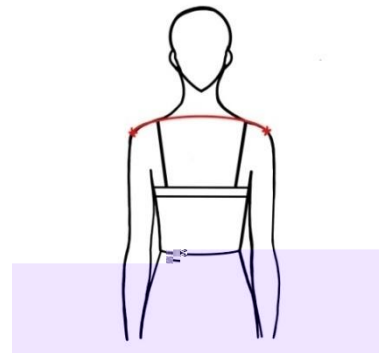


2



3

1.

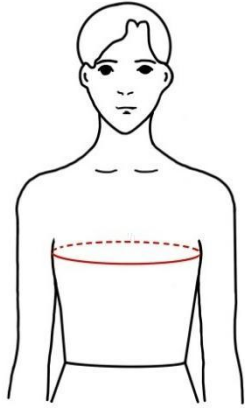


4

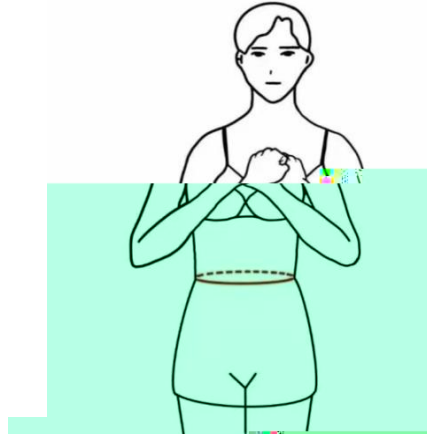
4

2.

5



5



6



7

3.

6

4.

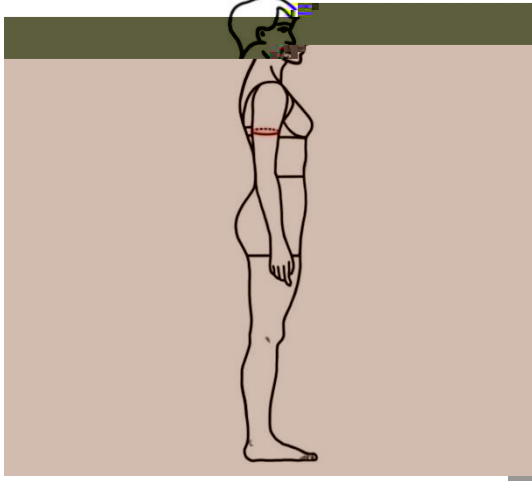
7

5.

8

6.

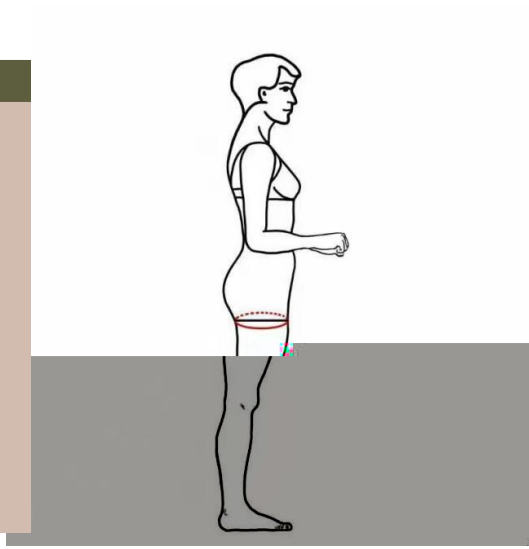
9



8

7.

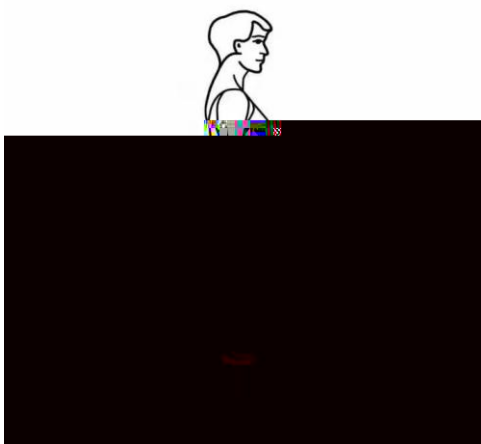
8.



9

10

11



10



11

kg

$\pm 0.5\text{kg}$

$\pm 0.5\text{cm}$